



**DAKOTA COUNTY RE-  
ENTRY ASSISTANCE  
PROGRAM  
(RAP)**

**MACCAC CONFERENCE 2017  
LYNN TENTIS - PROGRAM COORDINATOR  
KATHRYN JARGO - SOCIAL WORKER  
MARCH 3<sup>RD</sup>, 2017**

# DAKOTA COUNTY'S RE-ENTRY ASSISTANCE PROGRAM (RAP)

- Introductions
- RAP beginnings
- RAP description
- RAP evaluation and what we've learned
- Next steps
- Questions/comments

# RAP IN DAKOTA COUNTY

- Piloted in 2011 with 45 participants
- Bush Foundation funded an Accenture evaluation in 2012 that showed RAP participants reduced crimes committed and jail bed days post-participation
- Significant expansion of populations served enabled by Bush grant funds beginning in 2014
- RAP is targeted towards inmates with the highest number of unmet needs upon discharge



Help participants with basic needs during transition and community integration



Encourage participants to remain law-abiding



Serve the multiple needs of participants through wraparound services in the community



Provide positive support

# ELIGIBILITY CRITERIA

- Dakota County resident upon release
- 30 days or more left in custody, jail or prison
- No pending criminal or probation violations (unless there's a plea agreement)
- Exceptions for every rule
  - Count of Financial Responsibility (CFR)
  - Participants already released
  - Warrants in other counties

# RAP TEAM

- Chemical Health
- Mental Health
- Housing
- Child Support
- Workforce Center
- Financial Assistance
- Jail Programs
- Community Corrections

# TO START...

- How participants learn of RAP
  - People being released from prison, parolees, may be ordered as part of their release conditions
  - Jail staff play an integral part in spreading the word. Also, RAP Team members market to local Jails.
  - Probation officers and prison case managers make recommendations
- Potential participant in jail submits an application via kiosk
- RAP staff review all applications

# APPLICATION

Name \_\_\_\_\_ DOB \_\_\_\_\_

Release Date \_\_\_\_\_ Today's Date \_\_\_\_\_ Unit \_\_\_\_\_

1. Are you a Dakota County resident? Y or N

My address is \_\_\_\_\_

If homeless, where did you sleep the night before you came to jail? \_\_\_\_\_

2. Will you have housing when you get out of jail? Y or N

3. Do you have VA benefits? Y or N

4. Do you have Social Security benefits? Y or N

5. Do you have Medical Assistance? Y or N or Expired

6. Do you have an assigned Social Worker? Y or N

What is their name? \_\_\_\_\_

7. Do you have a Probation Officer? Y or N

What is their name? \_\_\_\_\_

8. Are you employed? Y or N

Where have you worked before? \_\_\_\_\_

9. Do you have any Mental Health issues? Y or N

10. Do you have any Chemical Dependency issues? Y or N



# Interested in some extra support?

The ReEntry Assistance Program  
may be able to help.



**Do you qualify?** (You may only need help in a couple areas)

- ✓ You have 30 days or more left
- ✓ You know exactly when you are leaving and have no warrants
- ✓ You are going to live in Dakota County

**Apply on the kiosk if it fits!**

# WHAT HAPPENS NEXT...

- If eligible, Staff meet with applicant to discuss their specific situation.
- Staffing/Intake with RAP team and applicant.
  - Jail: screening in the jail
  - Prison: phone conversation
  - Strengths and barriers
- Development of a re-entry case plan with them.
  - Rule 25 or mental health evaluation
  - Housing assessment (VI-SPDAT)
  - Queries into Vet Services, Child Support, Social Services
  - CAF and healthcare app
- Release meeting with participant and RAP team. "What needs to be different?"
- Up to 120 days after release, the Team will be available for assistance.

# CASE EXAMPLE

- [RAP Case Plan\\_Example 10.9.16.docx](#)

ALL TEAM MEMBERS WEAR  
MULTIPLE HATS

# TEAMING AND ADVOCACY

- Presentations to other organizations
- Connections with higher education/training
  - Skills classes
  - business/LLC education
- Creativity with resources
  - Prosocial activities?
  - Circles
  - MH drop in center (CSP)
- Housing
  - GRH I, GRH II, Attic
  - Our struggles, city ordinances

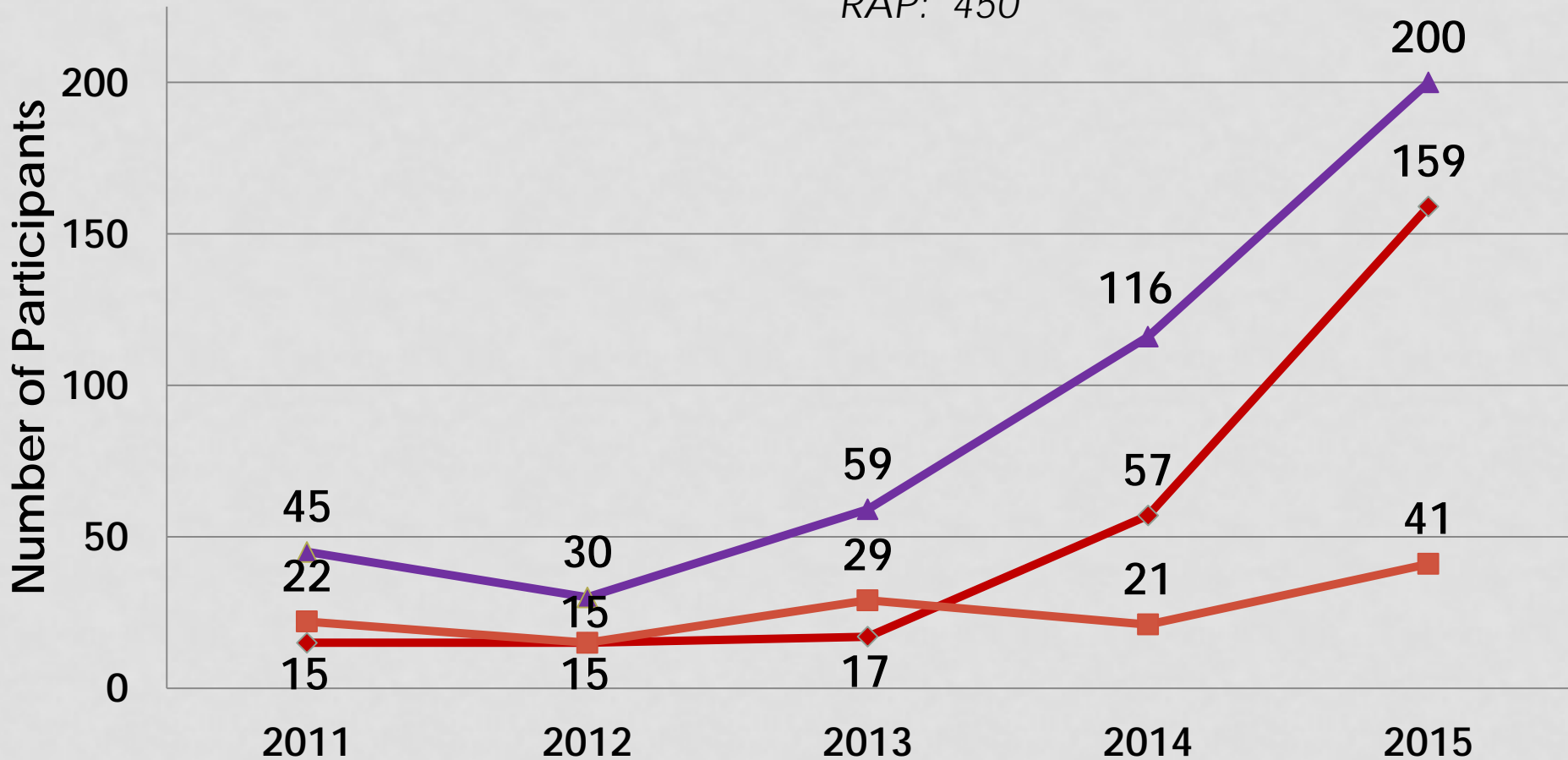
# RAP Participants

◆ Full RAP Completed

■ Slight Service Provided

▲ Total Served During Year

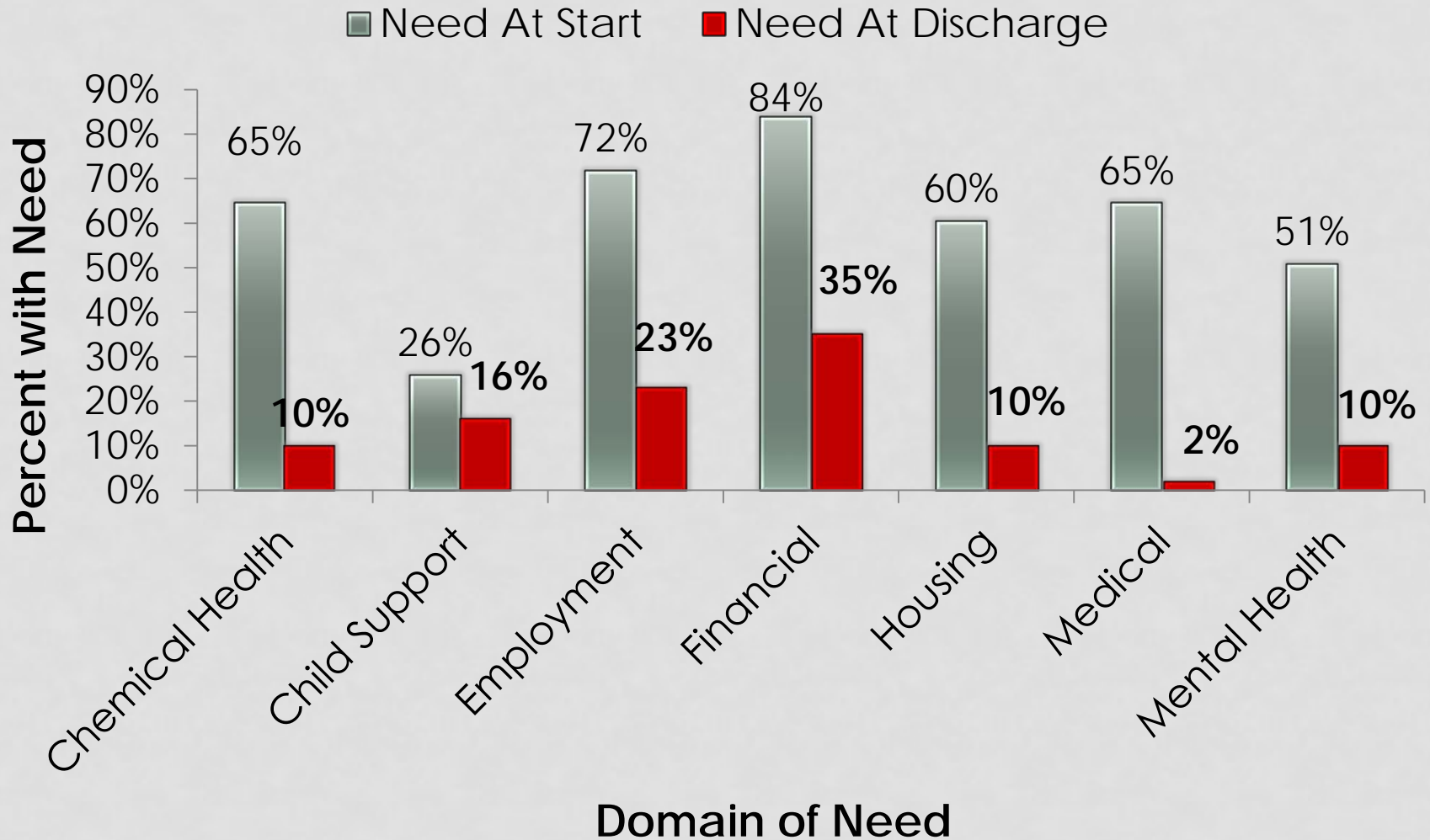
*Total Participants since inception of RAP: 450*



# RAP PROGRAM EVALUATION

- Findings were consistent with Accenture evaluation of the pilot participants:
  - Number of crimes committed decreased
  - Jail bed days decreased
- Level of services needs decreased among participants in the seven RAP domains:
  - Financial
  - Employment
  - Chemical health
  - Mental health
  - Housing
  - Child support
  - Health care

# REDUCING PARTICIPANT NEEDS

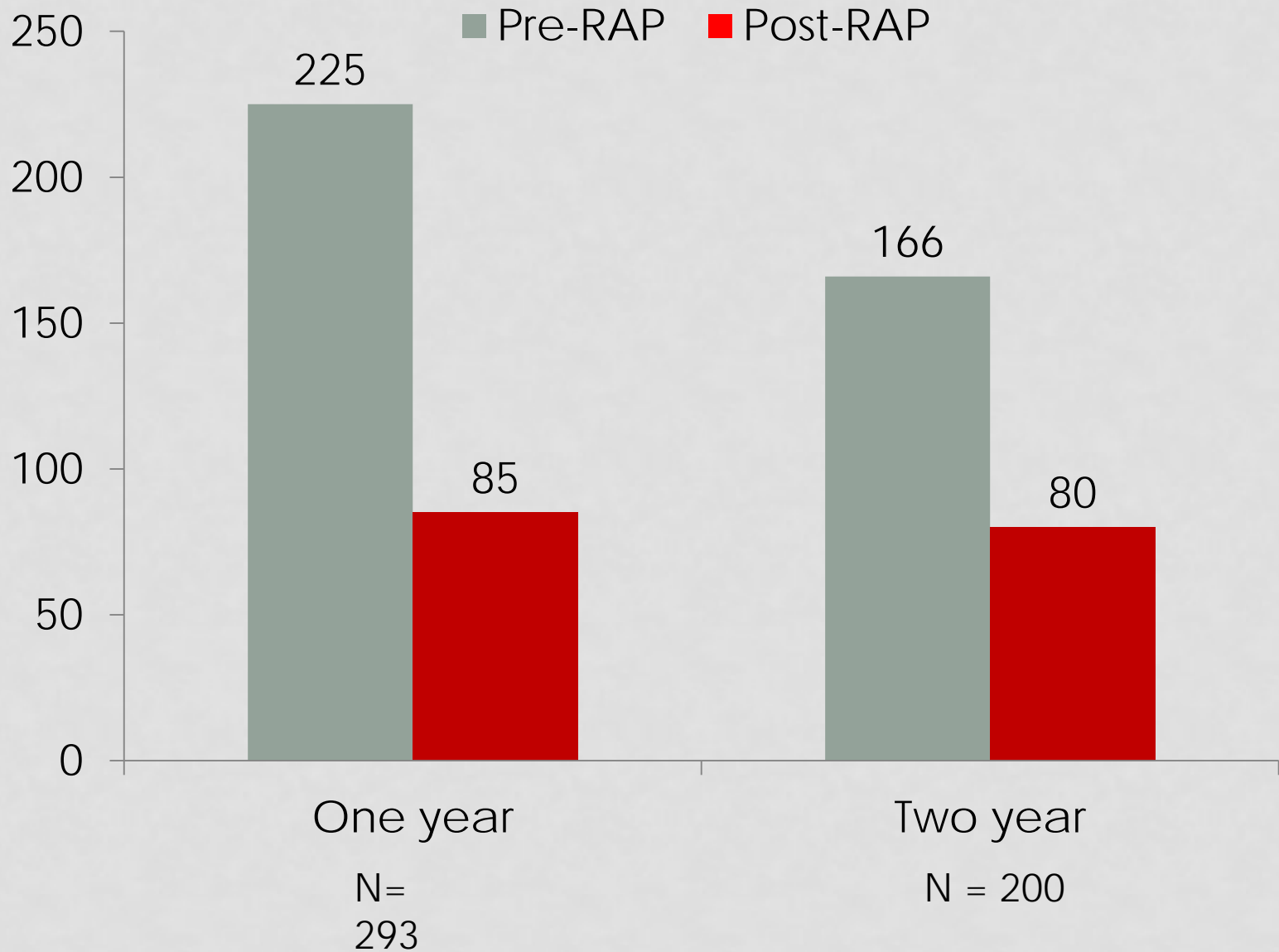




# EVALUATION TO COMPARISON GROUPS

- Within jail populations, compared RAP results to Inmates Motivated to Change Unit results
  - Both programs had success in reducing recidivism
- Within prison populations, compared RAP results to No RAP results
  - RAP showed better outcomes but the N was too small to be significant
- Compared RAP jail population to regular jail population without enhanced programming
  - RAP showed to significantly reduce felony charges one year after completion of RAP

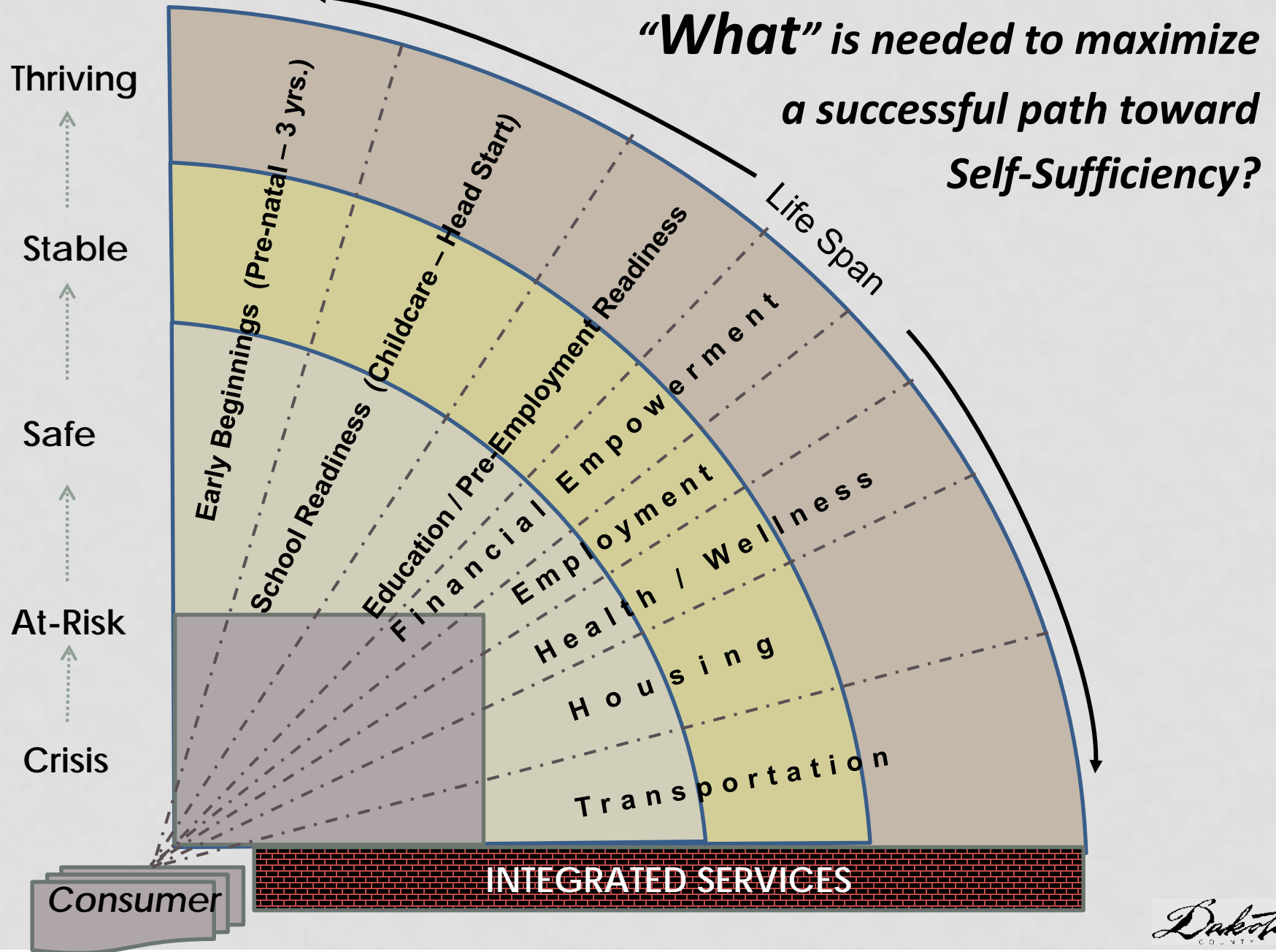
# Felony Convictions

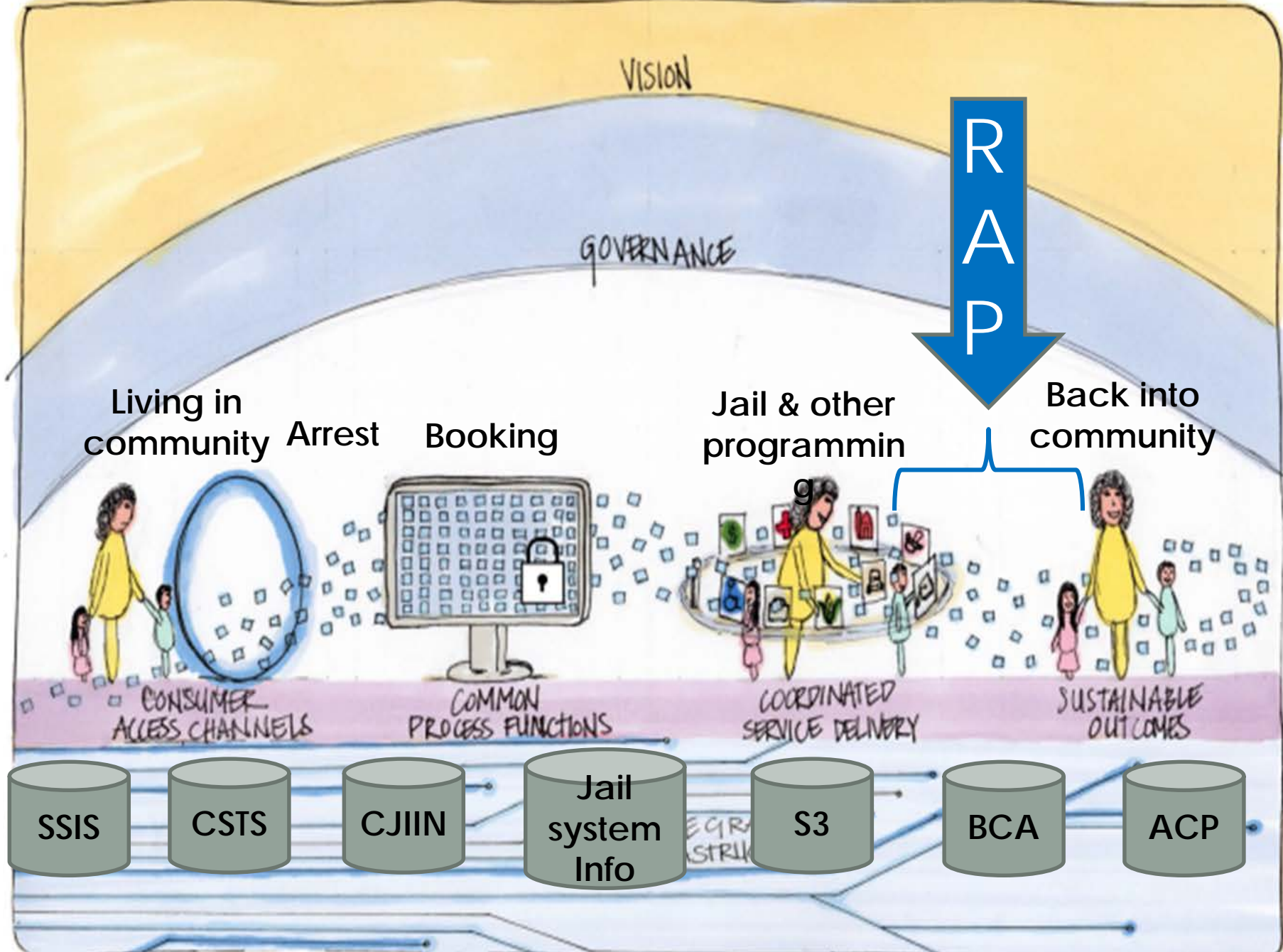


# WHAT HAVE WE LEARNED?

- Moved duration from 90 days to 120, more time out in the community with RAP support
- Increased contact to at least once a week; meet them where they are at
- Team Dynamics
- Considering our want for them to be motivated
- With whom we socialize is a big deal

# Community Services Self-Sufficiency Value Curve





VISION

GOVERNANCE

R  
A  
P

Living in community Arrest Booking

Jail & other programmin Back into community



CONSUMER ACCESS CHANNELS

COMMON PROCESS FUNCTIONS

COORDINATED SERVICE DELIVERY

SUSTAINABLE OUTCOMES

SSIS

CSTS

CJIIN

Jail system Info

S3

BCA

ACP

NEW BUSINESS MODEL FOR INTEGRATED HEALTH & HUMAN SERVICES SYSTEM.

# NEXT STEPS

- Add interventions that directly relate to reduced recidivism
  - T4C
  - IMR
- Dedicate RAP resources to inmates with the highest barriers to self-sufficiency
- Development of more learning opportunities
- Resources for prosocial activities

QUESTIONS?

# CONTACT INFORMATION

- Lynn Tentis:
  - Dakota County Community Corrections
  - [Lynn.tentis@co.dakota.mn.us](mailto:Lynn.tentis@co.dakota.mn.us)
- Rachel Bauer:
  - Dakota County Community Corrections
  - [Rachel.bauer@co.dakota.mn.us](mailto:Rachel.bauer@co.dakota.mn.us)
- Kathryn Jargo:
  - Dakota County Social Services
  - [Kathryn.jargo@co.dakota.mn.us](mailto:Kathryn.jargo@co.dakota.mn.us)